

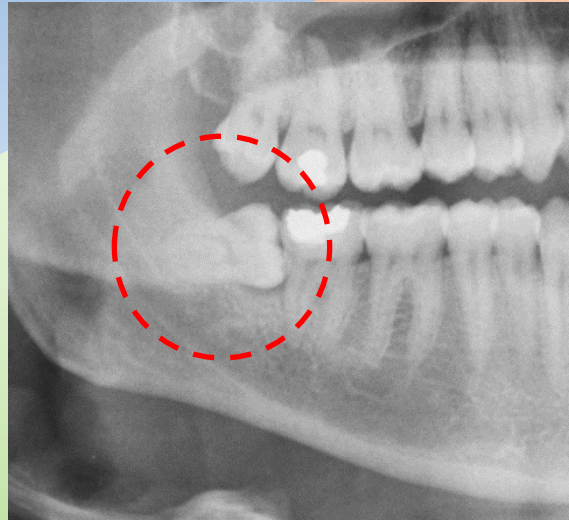
THE NATIONAL WISDOM TOOTH STUDY

Having wisdom teeth removed is one of the most common operations performed in the UK.

This Practice is participating in a national study on how best to manage wisdom teeth.

We need your help to improve treatment for all patients with wisdom teeth problems.

If you agree to participate, we would like to take your email address or mobile number so that we can send you a quick questionnaire to ask you about your recovery at 3 weeks, 4 months & 12 months after your operation.



Please take a few moments to read the information leaflet about the study.

If you are happy to participate please sign the consent form.

Thank You!

We really value your contribution

Saving Faces 

The Facial Surgery Research Foundation

The National Facial, Oral and
Oculoplastic Research Centre
NFORC

BAOMS
British Association of Oral and Maxillofacial Surgeons

BAOS
BRITISH ASSOCIATION
OF ORAL SURGEONS