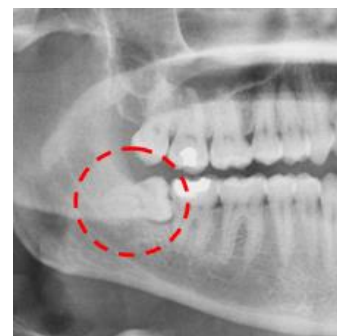


Wisdom Tooth Surgery - Service Evaluation

Version 1.5 – 13/09/21

What is a Service Evaluation?

A service evaluation is used to judge how well healthcare services are working. The facial surgery research charity, Saving Faces, is working with your surgeon to use information about your wisdom tooth surgery, and related medical history, to find out how well your hospital or dental practice is delivering services. The results will tell us how best to improve these services and may be used as a baseline for future research. This information sheet explains why we want to do this and the benefits it will bring.



What is the purpose of the service evaluation?

- To explore the impact of wisdom tooth treatment on patients using the service.
- To look at how well the treatments work.
- To look at safety, patient experience and patient satisfaction.
- To measure the standard of care and performance of your particular clinic.
- To inform changes that could improve the delivery of the service.
- To help plan future services for people with wisdom tooth problems.



Who is organising the service evaluation?

Saving Faces is a research charity. We aim to find the most effective treatments for all diseases, injuries and conditions of the mouth and face. Saving Faces will manage the study and help your surgeons with patient enrolment. We will collect, store, and analyse your information safely and securely on your surgeon's behalf.

Why have I been chosen?

We are asking patients who are having lower wisdom teeth surgery to take part.

Do I have to take part?

No, opting out will not affect your medical care and you are free to withdraw your consent at any time.

What are the benefits of taking part?

The results of the study will help us to assess the performance of your clinic and find the best treatments for future patients.

Are there any disadvantages in taking part?

Taking part will not affect your treatment in any way. However, we would like you to complete on-line surveys after your surgery. The surveys ask about your care, recovery, and any problems you had following treatment.

When and how will I complete the surveys?

We will contact you at 3 weeks and 4 months after your surgery to complete a survey. If you are having a coronectomy or state that you have long-term side effects in your 4-month follow-up survey, we will ask you to complete a third survey 1 year after your surgery. The surveys should take 2-5 minutes to complete.

The surveys will be sent from wisdomtoothsurvey@savingfaces.co.uk by email and [+44 7401 058522](tel:+447401058522) by text message. The email may go into your junk mail. Please check your junk mail for the surveys.

How do I join the Service Evaluation?

Just read this information leaflet and sign the consent form. If you have any questions, please ask your surgeon.

What information will be collected?

Your surgeon will enter your name, date of birth and NHS number and information about your relevant medical history and treatment into a secure on-line database. We will need your email and mobile phone number to send you the surveys.

How will information about me be stored?

The information will be stored on a secure encrypted digital platform called REDCap (Research Data Collection Service). Only Saving Faces and the clinical team at your hospital or dental surgery will be able to view all your information.

Will my privacy be protected?

Your privacy will be protected at all times. Your data will never be given or sold to any person or other organisation. When collecting medical information there are very strict rules about confidentiality, including those of the Data Protection Act 2018 and the EU General Data Protection Regulation (GDPR) 2018. Saving Faces must follow these rules and keep your information safe and secure.

What will Saving Faces do with my information?

We will remove all personal identifiers such as your name and NHS number from your data and combine it with data from other patients. We will analyse the de-identified data to determine the standard of care achieved by your hospital or dental practice. We will share the results with the clinical staff who are responsible for delivery of the service. We will also share any relevant findings of anonymised data with commissioners, managers, and patients. Data from the study will be used to determine the effectiveness and complication profile of different treatments and may be used to inform future research studies. We will publish reports and articles in scientific journals to spread the word about findings that may improve treatment.

In accordance with Saving Faces' data retention policy, we will hold your information for 5 years after the service evaluation has been published. A full fair processing statement outlining the legal basis for processing your data is available at <https://savingfaces.co.uk/privacy-notice/>

What are my choices about how my information is used?

We need to manage your records in specific ways for the study to be reliable. This means that we can't let you change the information we hold about you although you can ask to have it removed.

Can I withdraw from the service evaluation once it has started?

You may withdraw from the evaluation at any time without giving a reason. This will not affect your treatment. If you would like us to remove your identifiable data, we will do so and will not contact you again. We will not be able to remove your data from any non-identifiable datasets or reports.

Where can I find out more about how my information is used?


You can find out more about how we use your information by contacting Saving Faces.

Can I find out the results of the study?

The summary of every study conducted on the data will be shown on the Saving Faces website.

Saving Faces Research Office

 www.savingfaces.co.uk

 Phone: 020 3417 7757

 Email: info@savingfaces.co.uk

Wisdom Tooth Surgery Service Evaluation - Lead Clinicians:

Mr Geoff Chiu

Professor Paul Coulthard

Professor Iain Hutchison

Study managed by



Study supported by

